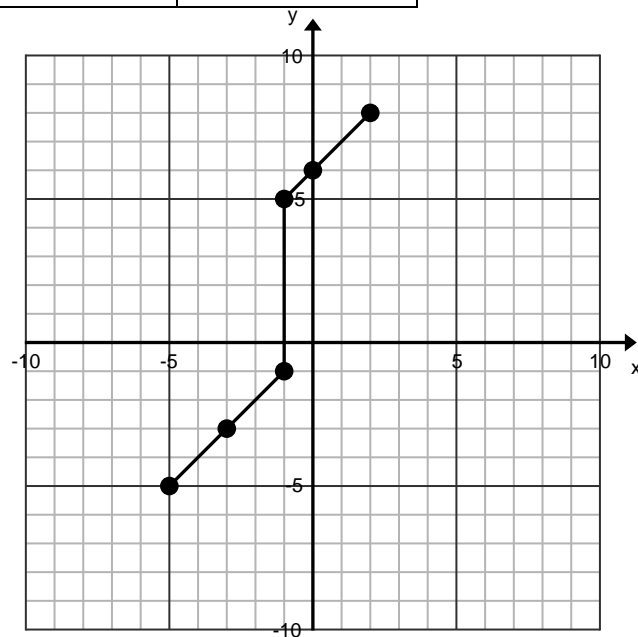


For each graph apply the following transformation and graph the function on the same grid.

1. Translate the graph 2 units to the left.

Original Point	Image Point



For the new graph state the:

Domain:

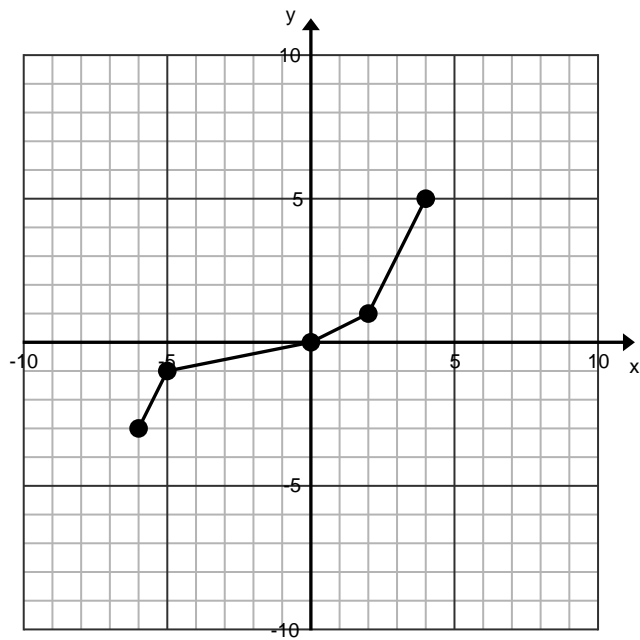
Range:

X-intercept:

Y-intercept:

2. Translate the graph 5 units down.

Original Point	Image Point



For the new graph state the:

Domain:

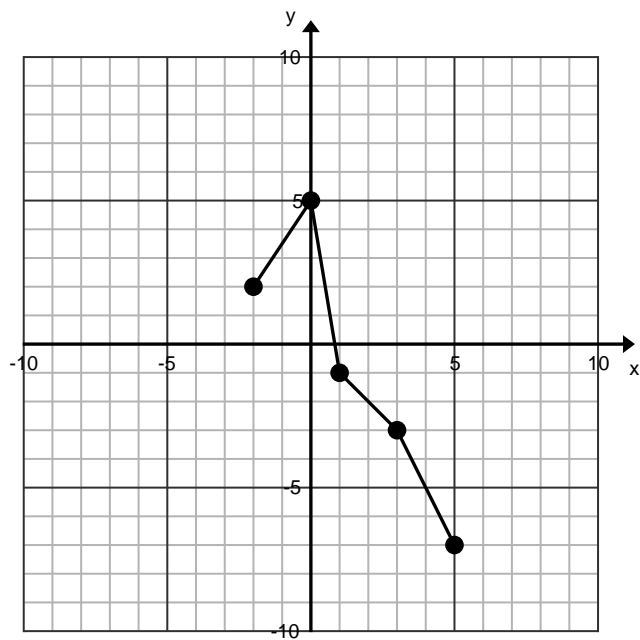
Range:

X-intercept:

Y-intercept:

3. Translate the graph 2 units right and 3 units up.

Original Point	Image Point



For the new graph state the:

Domain:

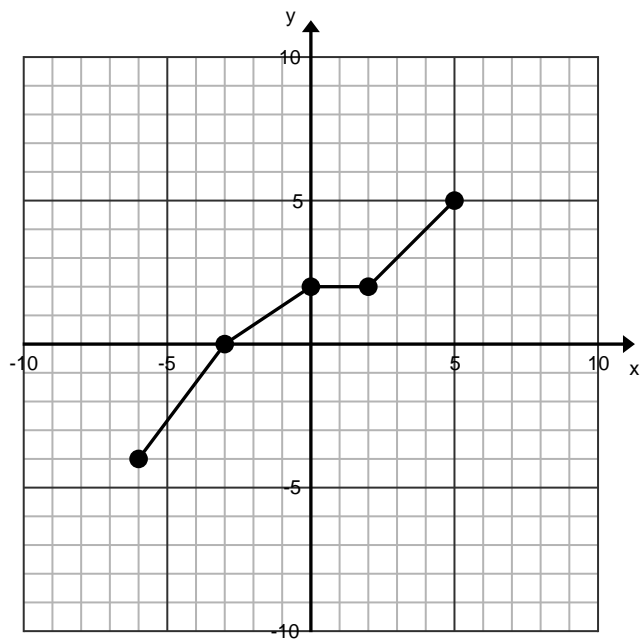
Range:

X-intercept:

Y-intercept:

4. Leaving the x-value the same, multiply the y-value of each point by 2.

Original Point	Image Point



For the new graph state the:

Domain:

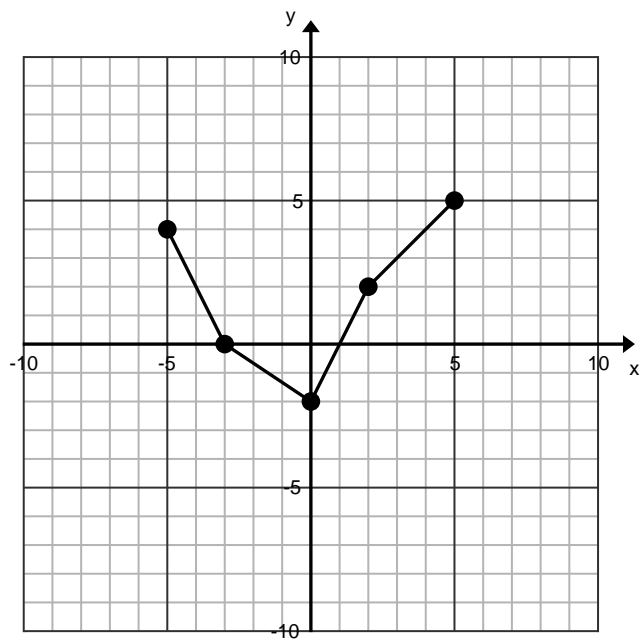
Range:

X-intercept:

Y-intercept:

5. Leaving the y-value the same, multiply the x-value of each point by 2.

Original Point	Image Point



For the new graph state the:

Domain:

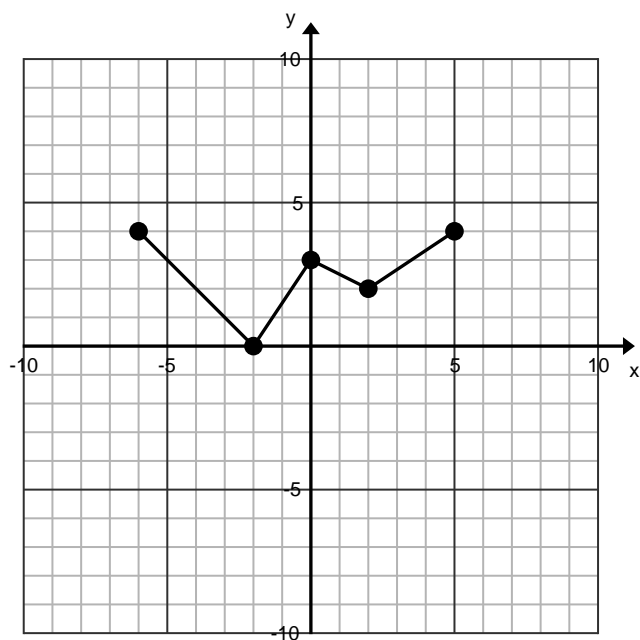
Range:

X-intercept:

Y-intercept:

6. Switch the x and y values for each point. Example (2, -3) becomes (-3, 2).

Original Point	Image Point



For the new graph state the:

Domain:

Range:

X-intercept:

Y-intercept: